

OUR SERVICES



We operate an in-house service department to keep your installation in full working order throughout its lifetime. We will be responsible for repairing any defective parts under warranty and returning the repaired ones to the customer.

LED RENTAL

We provide rentals of the latest indoor & outdoor LED video Walls, LED truck and LED standing display as part of a range of music Concerts, Sporting Events, Road Show and Corporate Events. We offer a comprehensive service including all services you need: transport, installation, set up of the screen in destination and event management with trained personnel to solve any kind of problem.



INSTALLATION GALLERY

“A PICTURE IS WORTH A THOUSAND WORDS”

We have over 7 years combined experience in the installation skills and have supplied more than 80's of clients from different kind of companies, and their brands with the very best technical productions.



OUR PRODUCT

INDOOR / OUTDOOR LED SCREEN / DIGITAL SIGNAGE

Outdoor LED

Full Color Screen Series



Applications:



commercial Building

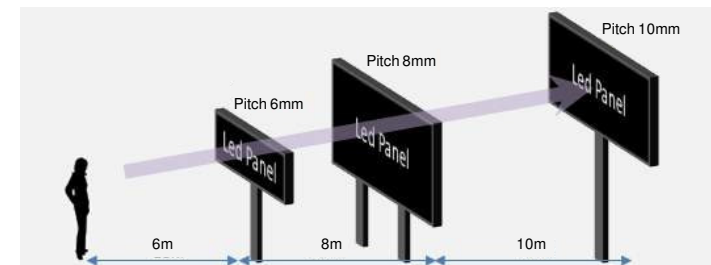
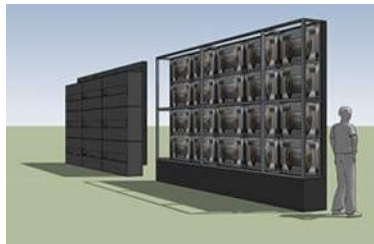
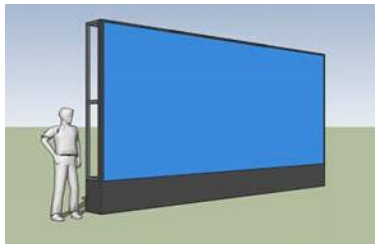


outdoor billboard

The smoothness of the control module is installed in the positive and negative 0.2mm, the entire screen good flatness. The circuit board adopts wave soldering process, which has the green oxygen layer, prevents the damp and oxidation of the line, and improves the service life.

Features

- Large Viewing angle and smooth displaying provide excellent visual effect from every angle.
- Ip65 rating ensures stable operation in severe weather.
- Ultra-high brightness, low attenuation, high reliability and weather ability.
- Good uniformity of color makes the displaying effect without coarseness and mosaic.



When the viewing distance is far you can chose a bigger pitch. Because you can't see the details.
When the LED display size is small it is better the have a smaller pitch.

Specification				
Pixel Pitch	5mm	6mm	8mm	10mm
Module Resolution	32 x 32	32 x 32	32 x 16	32 x 16
Module Size	160 x 160	192 x 192	320 x 160	320 x 160
Cabinet Size	960 x 960	960 x 960	768 x 768	960 x 960
Viewing Distance	5 meter	6 meter	8 meter	10 meter
Brightness	5,500	6,000	6,000	6,500
Life Span	100,000 hours			

Fixed installation display screen

LED Screen Series



HD display high refresh rate, seamless splicing, removable and convenient and flexible features, even at a relatively, short distance. It show super clear display.

Features

- Small pixel pitch with high resolution and pixel density
- Ultra-thin aluminium box design, high precision, easy to install and maintenance
- Seamless connection, perfect video performance



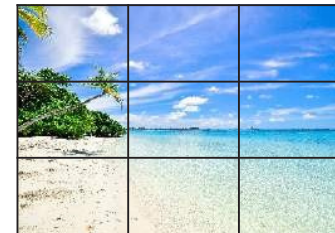
High gray scale and refresh rate
with 14bit of gray scale and 2000Hz refresh rate, to get more real images

Applications:



Seamless connection, whole / Big screen display

Perfect seamless connection to ensure silky effect on displaying



LCD screen



Fix installation LED display

Specification				
Pixel Pitch	1.667mm	2mm	3mm	4mm
Module Resolution	120 x 180	64 x 64	64 x 32	64 x 32
Module Size	200 x 300	128 x 128	192 x 96	256 x 128
Cabinet Size	400 x 300	512 x 512	576 x 576	768 x 768
Viewing Distance	2 meter	2 meter	3 meter	4 meter
Brightness	800	1,000	1,200	1,600
Life Span	100,000 hours			

lamp pole led display

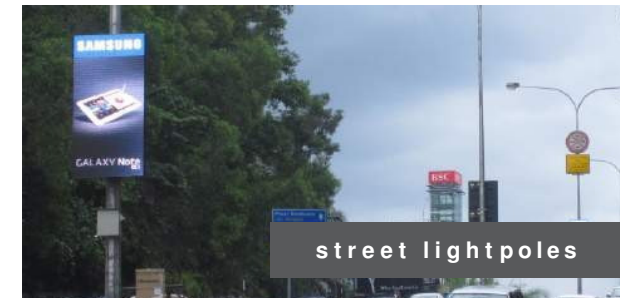
Outdoor LED Display



Applications:



street lightpoles



street lightpoles

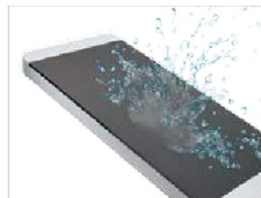
Can release the system through the intelligent cloud control LED cluster information, and the construction of the national service for community residents a digital community network interactive space. Create a LED ad network. Intelligent transportation, digital intelligent community, smart community.

Features

- Automatically adjust brightness on day time / night time.
- Global GPS positioning



Front access service
easy maintenance



IP 65waterproof



Vendalition Fan



Central single screen



Dual opposed



Single sided single screen

Specification

Pixel Pitch	5mm	6mm	8mm	10mm
Display Size	960 x 1600	960 x 1536	768 x 1536	960 x 1920
Colors	16.7m			
Gray Scale	14bits			
Viewing Distance	5m	6m	8m	10m
IP Rating	IP65			
Life Span	100,000 hours			

STADIUM PERIMETER

Stadium LED Display



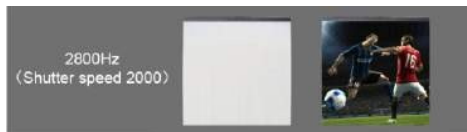
Outdoor IP65 Waterproof are the most welcomed design of led stadium perimeter for outdoor use, it's waterproof, uv proof and easy to assemble, widely applied for all kinds of sport stadium.

Features

- Use soft material for the player protection and reduce the outside impact. It can efficiently protect the player from injury.
- Aluminum alloy is used for the cabinet to reduce weight and create convenience for installation.

High refresh high grayscale

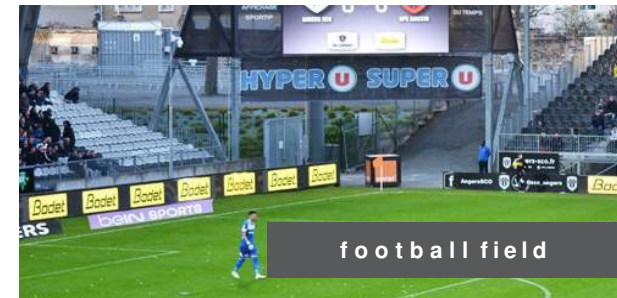
up to 2800Hz refresh rate, in the case of professional camera and camera shooting, the stadium screen shoes no smear, no screen flash, no water ripple, the screen is stable, and successfully solved the high refresh rate low gray-scale problem, to ensure that the high-definition fine display screen, fully meet the live broadcast lens switching flicker-free.



Applications:



Basketball court



football field



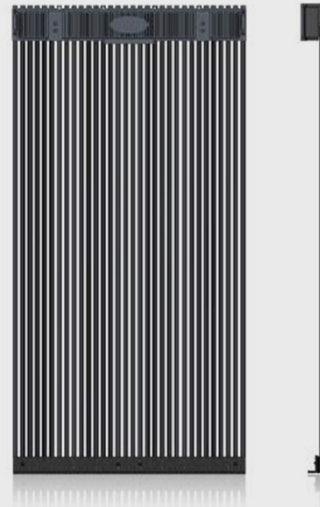
Independent support structure Multi-angle adjustment

there can be independent adjustment of the support structure, even if the impact by a strong external force, still survive. According to the actual situation to adjust the box installation angle, flexible changes, the angle of support 30°/ 45°/ 60°/ 90°

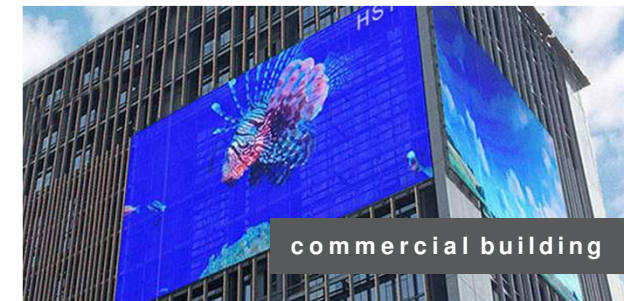
Specification				
Pixel Pitch	8mm	10mm	12mm	16mm
Module Size	256 x 128	320 x 160	192 x 192	256 x 256
Cabinet Size	1024 x 1024	960 x 960	960 x 960	1024 x 1024
Brightness	5,600	7,000	6,500	7,500
Gray Scale	14bit			
Scan	1/4 scan			
Life Span	100,000 hours			

curtain led screen

Transparent LED Series



Applications:



commercial building



Shopping centre

A new type of transparent LED wall through technological breakthroughs, not only ensures between floors. Glass facade lighting requirements and scope window lightning structure. and has, the f unction of heat dissipation, good waterproof, anti-aging performance, convenient installation and maintenance.

Feaatures

- Ip65 protection level
- Super light and slim design, 75% lighter than traditional Cabinet
- RGB deep gray level processing



Easy maintenance



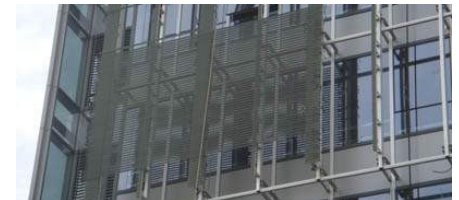
Transparent Rate 60%



LED Chip

Pursuing a minimalist design of LED display holding structure

Minimalist holding structure, small size, easy installation, easy hoisting and replaceable.



Specification				
Pixel Pitch	10.66mm	15.625mm	20mm	31.25mm
Brightness	6,500			
Refresh Rate	1000Hz			
Gray Scale	14bit			
Size	960 x 256	1200 x 320	1280 x 320	500 x 1000
Transparent Rate	20%	35%	35%	65%
IP Level	IP66			

smart e it board

Interactive Touch Screen Display



Applications:

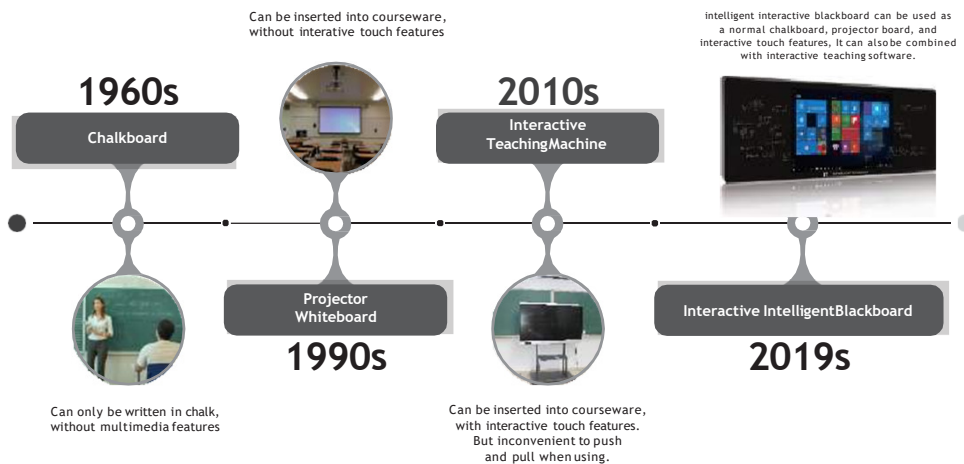


E-Blackboard provides a more scientific solution to classrooms with a touchscreen panel and writable glass surface design. It empowers teachers to be efficient and allows students to have an intuitive perception of teaching contents.

Consist of 3 parts:



Specification		
Panel Size	75"	86"
Viewable Area	1649.7 (H) x 927.9 (V)	1895.04(H) x 1065.96(V)
Max Resolution	3840 x 2160 (R.G.B)	
Aspect Ratio	16:9	
Surface Treatment	Toughened multi touch nano touch glass (Anti glare)	
Touch Points	10 points	
Safe Design	Vandalproof, Waterproof, Dustproof	





dual screen floor stand

Indoor Digital Display



Applications:



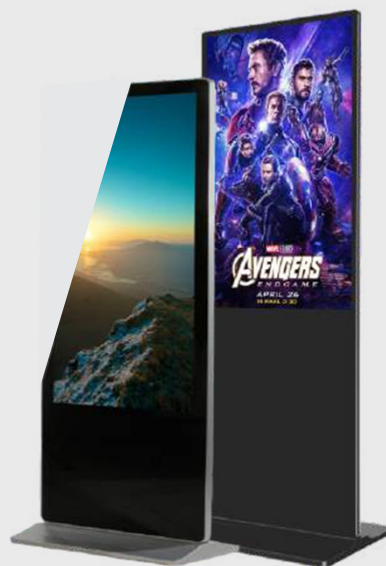
Dual screen display can be display in mall for advertisement purpose, the screen of the digital can be view from both side when the people is walk around. It come with tempered glass protection, and the latest technology design for super-slim dual screen display 19.4mm thickness.



Specification	
Panel Size	55" wide LCD
LCD Ratio	16:9
Active Area	1209.6(H) x 680.4(V) mm
Pixel Pitch	0.63 x 0.63mm
Resolution	3840 x 2160(R.G.B)
Brightness	420cd/m2
Colour Support	13.7M

STANDING LED DISPLAY

Indoor Digital Display



Its portrait standing design and high quality tempered glass protection tell the difference from other signage. This model is equipped with commercial grade LG LIPS panel, support long hours working mode and it's twice the brightness of traditional TV.

Features

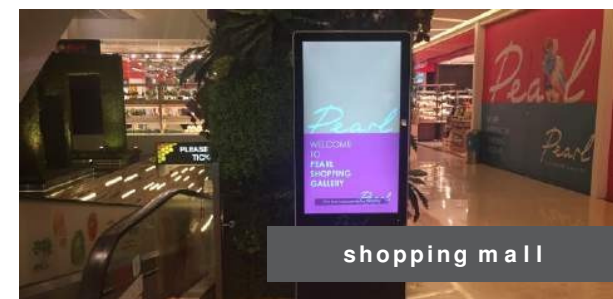
- Industrial grade components support 7*24 touch working mode
- Metal Standing design, good interface
- Support terminal log, contents log and contents encryption
- Smart multi-touch screen, easy to interactive the screen



Applications:



retail stores



shopping mall

Split Screen



a split screen



two screen



three screen

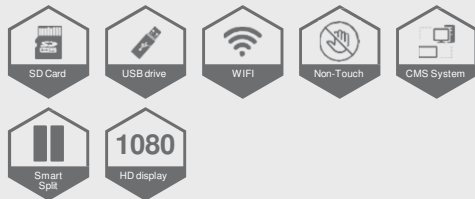
Support play video and pictures alone or simultaneously. In this way, you can display several advertisement at the same time. one touch operation, convenient and efficient.

Specification

Panel Size	42"	50"	55"	65"
Aspect Ratio	16:9			
Active Area	930 x 523	1096 x 616	1209 x 680	1428 x 803
Max Resolution	1920 x 1080			
Brightness	500cd/m2			
Contrast Ratio	5000:1			
Dot Pitch	0.630 x 0.630			

IPOSTER

Indoor LED Poster Display



iPoster Display is front serviceable, the magnetic module design saves your time and cost, easy for maintenance. Built-in media player allows for upload ads video or pictures via WIFI or USB.

Features

- Controlled via mobile phone / Computer / WiFi / USB driver ,all device can operate via APP, change the content freely. Save file on phone, upload at 10S.
- Multiple way of installations, for hanging, wall-mounted, base-standing, bracket standing and creative installation.
- 1200 nits brightness, 3 times lighter than LCD display



Eye Catching from long distance

Full screen 1900mm × 600mm, 20M visible distance, faster information delivery.



Multi-screen cascade

Applications:



retail stores



exhibition

Multiple way of installation:



Bracket standing



Based standing installation



Hanging



Titled installation

Specification		
Pixel Pitch	1.9mm	2.5mm
Module Resolution	84 x 112	108 x 144
Cabinet Size	1902 x 572 x 35	1902 x 572 x 35
Cabinet Resolution	756 x 224	972 x 288
Brightness	1200cd/m2	1000cd/m2
Contrast Ratio	4000:1	4000:1
Life Span	80,000 hours	

extreme wide display screen

Digital Screen Display



Unique shape and design, allows you to equip your digital signage applications with even the most atypical dimensions or spacing. Featuring thermal protection and a sealed panel design, this model is designed for 24/7 use in virtually any environment. When you add its video wall capabilities, eco-friendly technologies, built-in expansion slot and advanced management controls.

Features

- Using Ipub Central Management software
- High image quality, High brightness , with black color metal case



Support Horizontal / Vertical display

Installed on a wall, on a pillar or perhaps over the entrance, it adds premium style while uniquely engaging with all who behold its striking form factor

Applications:



Train Station



retail stores

Content Management



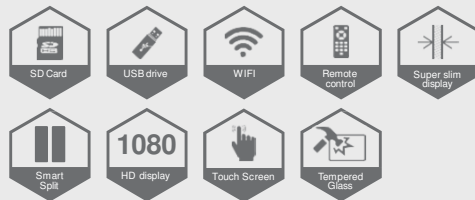
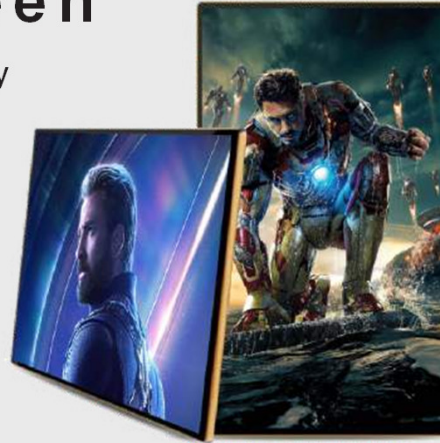
Multi Content Creation

User can edit content that consists of one video and several still images (up to 20) as they want

Specification			
Panel Size	28"	29.6"	38"
Aspect Ratio	16:3	16:6	1920 x 540
Max Resolution	1366 x 253	1366 x 509	16:4:5
Brightness	700/m2		
Contrast Ratio	3000:1		
Response Time	6.5ms		
Viewing Angle	176 / 176		

ultra slim digital screen

Indoor Wall-mounted Display



Slim design with black toughened glass Horizontal or vertical screen as you like, easy to install it on the wall with bracket. Auto display in loop, USB auto uploading new advertisements. Beautiful appearance, suitable for Hotels, Restaurants, Cinemas, etc.

Features

- Auto start when plug the power, support auto-replay function Definite time for each day (setting five periods per day) or week (setting for 7 days), actually 24 hours auto-play without anybody management
- High resolution, full HD, 1920 x 1080, support split screen display.



Ultimate Sense of Touch Control

Adopt high sensitivity 10-point capacitive touch panel, coordination with high frequency self-touch chip, G+G lamination technology. High hardness screen, scratch resistant and wear-resistant, high transmittance, sensitive touch, quick response

Applications:

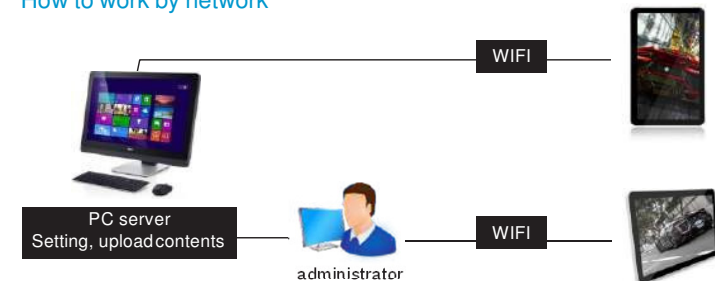


restaurants



retail stores

How to work by network



Specification				
Panel Size	32"	42"	55"	65"
Aspect Ratio	16:9			
Active Area	709 x 340	930 x 523	1209 x 680	1428 x 803
Max Resolution	1920 x 1080			
Brightness	500cd/m2			
Contrast Ratio	5000:1			
Dot Pitch	0.630 x 0.630			

MULTI TOUCH DISPLAY SCREEN

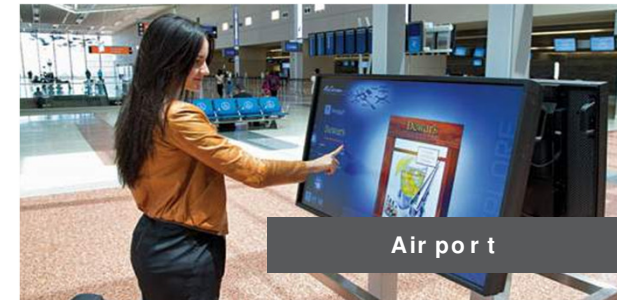
Digital Screen Display



Applications:



Shopping centre



Air port

Visitors are need this guidance to find their way around. As places get larger all the time, there is an increased need for way finding. Map Directory software combines way finding with information about the mall, connected to with your mall Website, mall App, social media, events, promotions and products.

Features

- Sizes are from 42" to 65" with elegant free standing design
- Windows based, Android is optional, perfect for second customization, support many expansion peripherals
- 10 points projected touch screen with 3 mm tempered glass covered



Interactive Touch Display

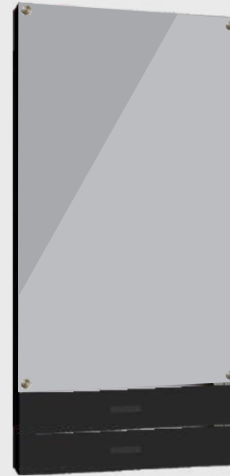
Human-computer interaction function, support various software, can satisfy emand of query, play games, watching video, listening to music and so on



Specification				
Panel Size	42"	50"	55"	65"
Aspect Ratio	16:9			
Active Area	930 x 523	1096 x 616	1209 x 680	1428 x 803
Max Resolution	1920 x 1080			
Brightness	500cd/m2			
Contrast Ratio	5000:1			
Dot Pitch	0.630 x 0.630			

magic mirror

Indoor Digital Display



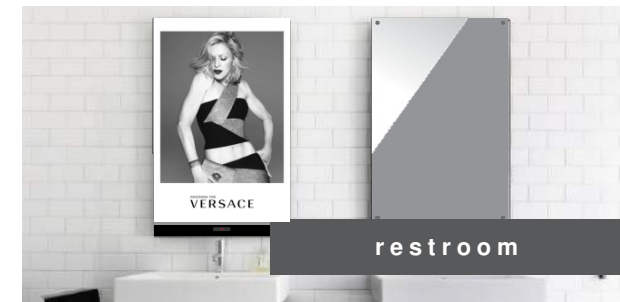
Body detector / motion sensor (optional) will turn the magic mirror to an “ON” mode. It will display the LCD programs when human body is detected and turn it off otherwise. Sensors are very effective, and the sensing is adjustable within 2 meters’ range.

Features

- Customized size / Tailor-made design
- Auto content update via USB drive



Applications:



Function:

Display and loop full screen file when power is on. When the device detects moving object in front of it, the full-screen image will zoom out to the top left hand corner leaving behind majority portion of the screen as mirror.

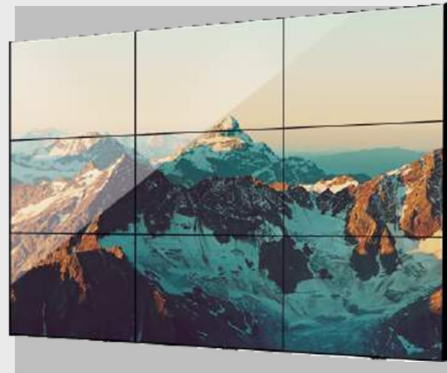
Specification

Panel Size	12.1" / 15" / 22" / 32" / 42"
Mirror Size	adjustable according to customer's design
Aspect Ratio	16:9
Max Resolution	1920 x 1080
Brightness	400
Contrast Ratio	1600:1
Support	1080 HD display Video / Picture / Music



led video wall

Indoor Digital Display



Applications:



Retail store



shopping centre

DID Split Screen series product adopt industrial panels of famous brand, such as SAMSUNG & LG. Combined with a series of integrated application including the splicing technology of super narrow bezel, signal switching technology, lossless remote transmission technology and image processing techniques to compose a LED video wall display system with intelligent control, advanced operation high brightness and high definition.

Features

- ULTRA-NARROW BEZELS , a thin-profile design and a screen-to-screen bezel width of as little as 3.5mm.
- Designed for use in 24/7 control rooms and other critical environments that demand continuous operation.



Specification	
Panel Size	46" / 47" / 50" / 55" / 60"
Panel Brand	SAMSUNG / LG
Max Resolution	1920 x 1080
Contrast Ratio	5000:1
Bezel	3.5mm / 5.5mm
Frame Material	Black Metal
Color	8bit - 16.78m

face recognition

Advance Thermal Screening &
Scanning System



Applications:



Office entrance



shopping centre

This product adopts the AMLOGIC 905 high-performance A.I algorithm chip scheme, and the Android 5.1.1 system is equipped with industrial grade binocular camera and infrared thermal imaging module. The scheme uses the technology of living face recognition to support 50,000 level face database, binocular living face recognition and millisecond level judgment. The product supports mask recognition, body temperature detection, attendance punch, access control, QR barcode and other functions. It is a safe, efficient and accurate face recognition access control product.

Features

- Adopt high-performance intelligent processor, face recognition algorithm based on deep learning, greatly improve the rate of face capture.
- Support real-time temperature detection and high temperature alarm.
- Support face optimization, face enhancement & face exposure to improve imaging quality.
- Support secondary development: open interface for face recognition algorithm manufacturers and software vendors to add value to applications.

Specification	
Display Size	8 inches
Overall Size	284 x 140 x 29mm (L x W x H)
Processor	High-performance 32 bit 4-core ARMchip
Flash	8GB
Measurement Mode	Thermographic temperature measurement (3 seconds)
Measuring Distance	0.3 - 0.8m (recommended 0.5m)
Power Supply	3-5V
Temperature Output	Real-time parallel output
Temperature Correction	Manual and automatic calibration
Alarm Threshold	Adjustable
Wiegand Interface	Support wiegand 26 & wiegand 34
Other Interface	R232, TTL, WIFI, Rj45, USB
Style	Symmetrical design, can be hang horizontally & vertically
Operating System	Android 5.1.1 or above
Working Environment	Indoor & outdoor
Card Reading Speed	0.2S
Input Power	DC 12V 2A

Outdoor LED Display /

1 / PJ OMC Group Sdn. Bhd. , Petaling Jaya

Outdoor LED P10 display Size:
4800mm(H) x 15360mm(W)

2 / NZ Curry House, Jalan Ampang

Outdoor LED P10 display
Size: 38'(H) x 60'(W)



Outdoor LED Display /

1 / Stadium Sultan Ibrahim, Johor

Outdoor LED P10 Stadium Parameter

2 / Kayu Nasi Kandar, Subang Taipan

Outdoor LED P10 display Size:
4800mm(H) x 2880mm(W)





Outdoor LED Display /

1 / Regions Clinic, Suria @ North Kiara

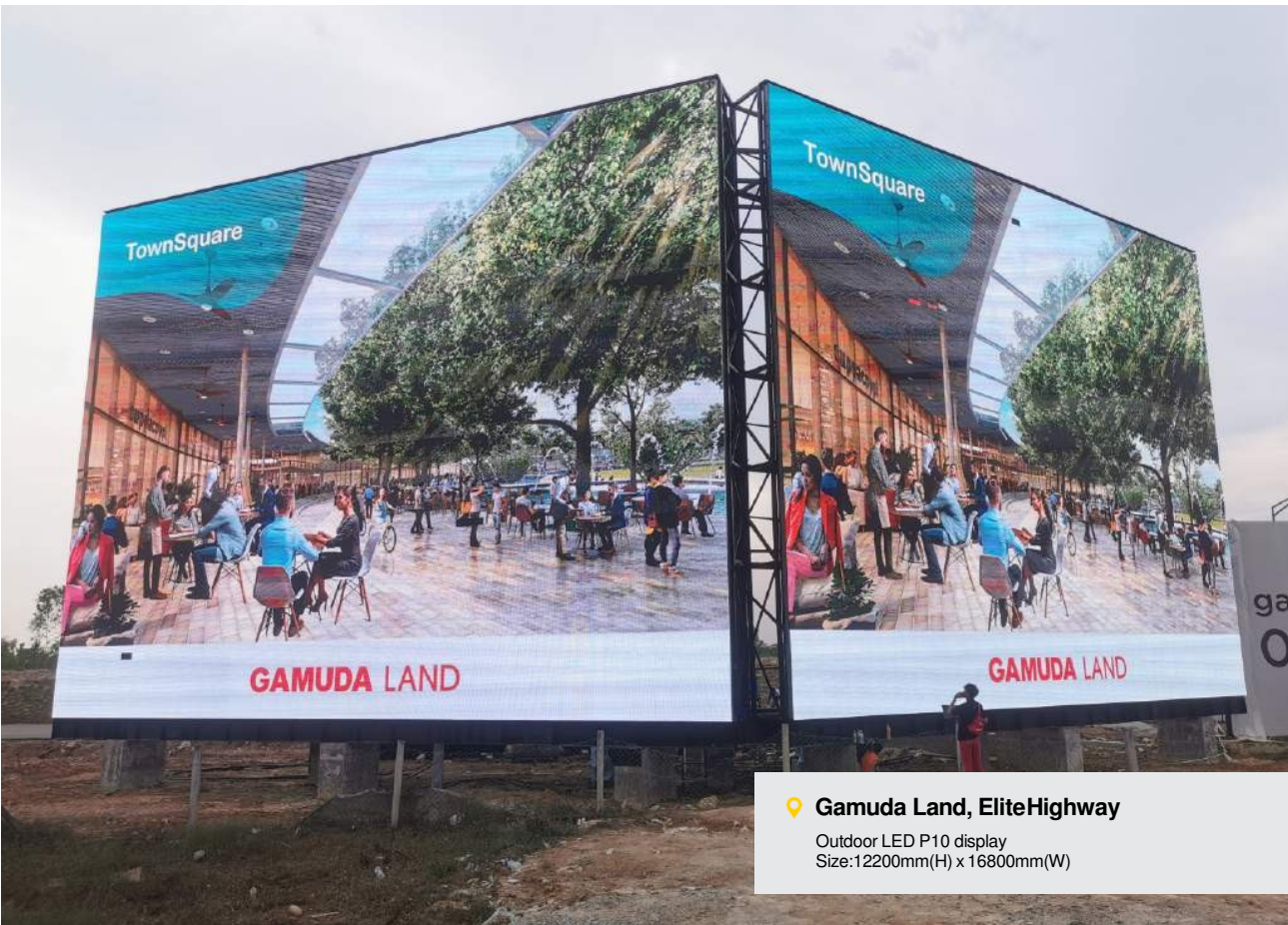
Outdoor LED P10 Stadium Parameter
Size: 960mm(H) x 5760mm(W)

2 / Awinco Overseas

Outdoor LED P10 display Size:
2000mm(H) x 3000mm(W)

3 / Institut Koperasi Malaysia, Petaling Jaya

Outdoor LED P10 display Size:
1920mm(H) x 3840mm(W)



📍 Gamuda Land, Elite Highway

Outdoor LED P10 display
Size: 12200mm(H) x 16800mm(W)



Outdoor LED Display /

1 / GS Realty, Sungai Besi

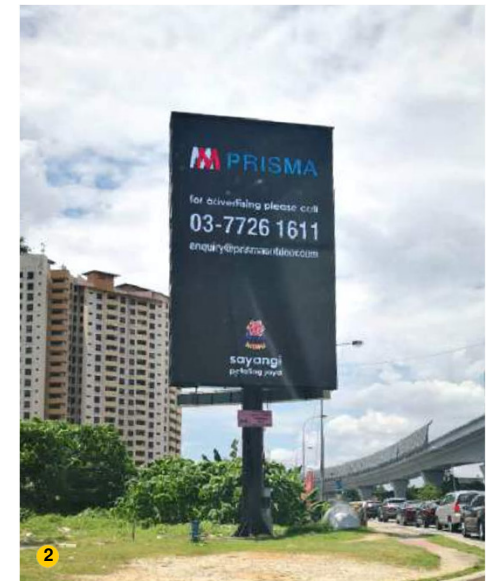
Outdoor LED P10 display
Size: 16'(H) x 24'(W)

2 / Media Mesra, Kota Damansara

Outdoor LED P10 display
Size: 50'(H) x 30'(W)

3 / Bank Rakyat, Menara Bank Rakyat

Outdoor LED P10 display
Size: 12'(H) x 18'(W)





Outdoor LED Display /

1 / TRUEDAN, SS15

Outdoor LED P5 display Size:
1600mm(H) x 960mm(W)

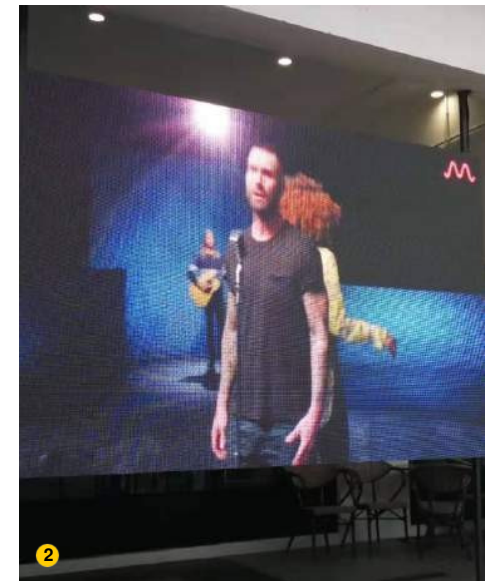
2 / INSTEA, Sri Petaling

Outdoor LED P5 display Size:
1920mm(H) x 2880mm(W)



3 / MRCB, Brickfields

Outdoor LED P10 display
Size: 15'(H) x 30'(W)





Indoor LED Display /

1 / Avenue K Shopping Mall, Ampang

Indoor LED P4 Stadium Parameter
Size: 1480mm(H) x 7680mm(W)

2 / Gamers Hideout, Lot 10 Shopping Mall

Indoor LED P3 display
Size: 6'(H) x 12'(W)

3 / K&K Revolution, OUG

Indoor LED P4 display Size:
4600mm(H) x 3000mm(W)



Mercedes-Benz, Mutiara Damansara

Indoor LED P2.5 display
Size: 9'(H) x 15'(W)





Indoor LED Display /

1 / ESTEE LAUDER, Pavilion Mall

Indoor LED P31.25 Display
Size: 16.5'(H) x 8'(W)

2 / IJM, TRX, KL

Indoor LED P2.5 display
Size: 13'(H) x 20'(W)

3 / Pik Wah Restaurant, Wisma Maba KL

Indoor LED P10 display
Size: 6'(H) x 9'(W)



📍 Gabungan Pertubuhan Cina Malaysia

Indoor LED P4 display
Size: 8448mm(H) x 4608mm(W)





Indoor LED Display /

1 / Melia Seasons Restaurant, Kajang

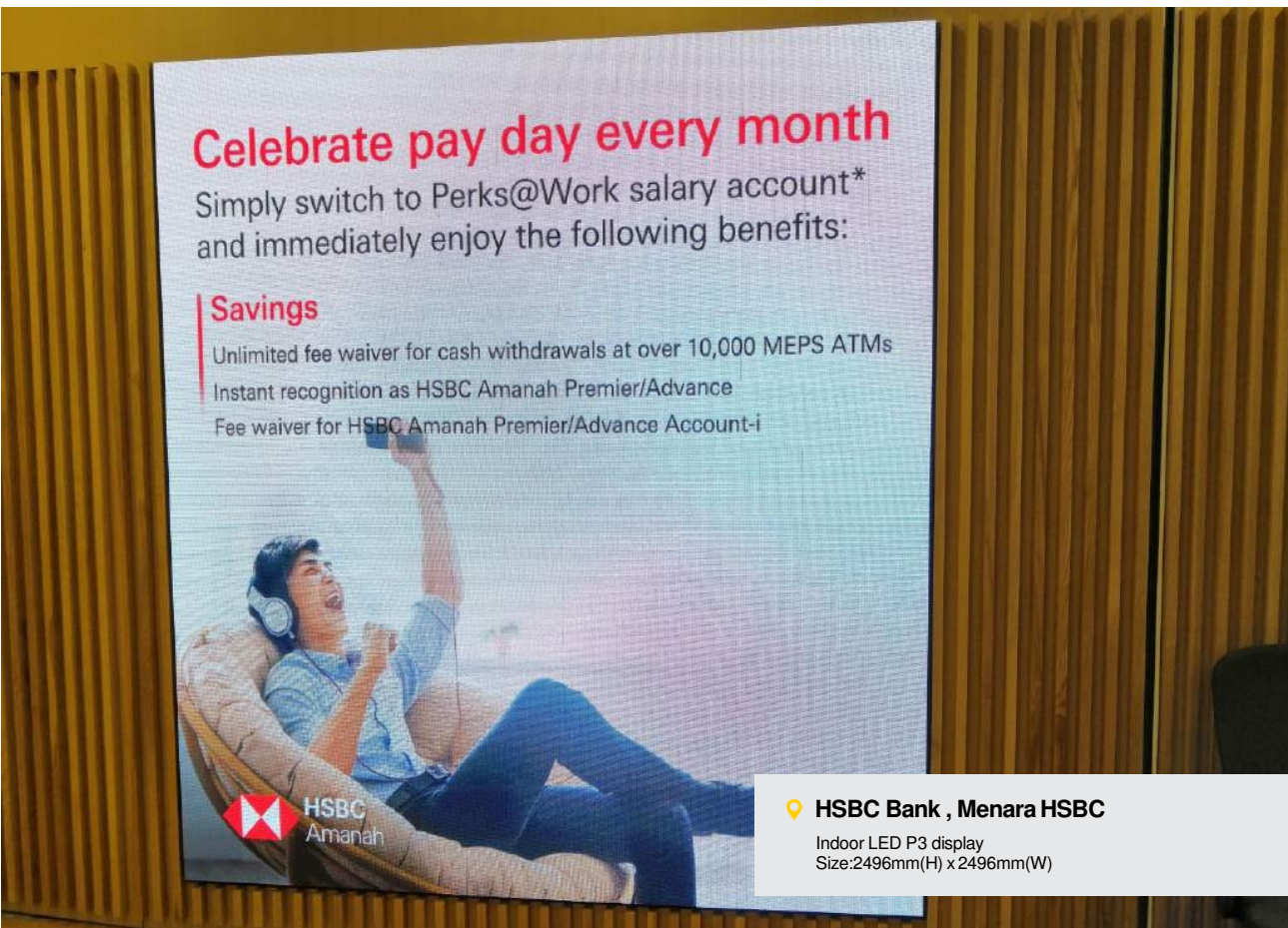
Indoor LED P6 Display
Size: 12'(H) x 24'(W)

2 / Sin Choi Wah Restaurant, Kepong

Indoor LED P6 display
Size: 12'(H) x 24'(W)

3 / Sin Choi Wah Restaurant, Kepong

Indoor LED P6 display
Size: 9'(H) x 12'(W)



HSBC Bank , Menara HSBC

Indoor LED P3 display
Size: 2496mm(H) x 2496mm(W)





Indoor LED Display /

1 / Tai Thong Restaurant, Kepong

Indoor LED P4 Display Size:
3072mm(H) x 5120mm(W)

2 / Tropicana Golf Club, Petaling Jaya

Indoor LED P4 display
Size: 13'(H) x 26'(W)

3 / Palace 8, Wisma MPL

Indoor LED P6 display
Size: 9'(H) x 15'(W)



Titian Sama

Indoor LED P5 display
Size: 4800mm(H) x 2880mm(W)





Indoor LED Display /

1 / Melia Seasons Restaurant, Kajang

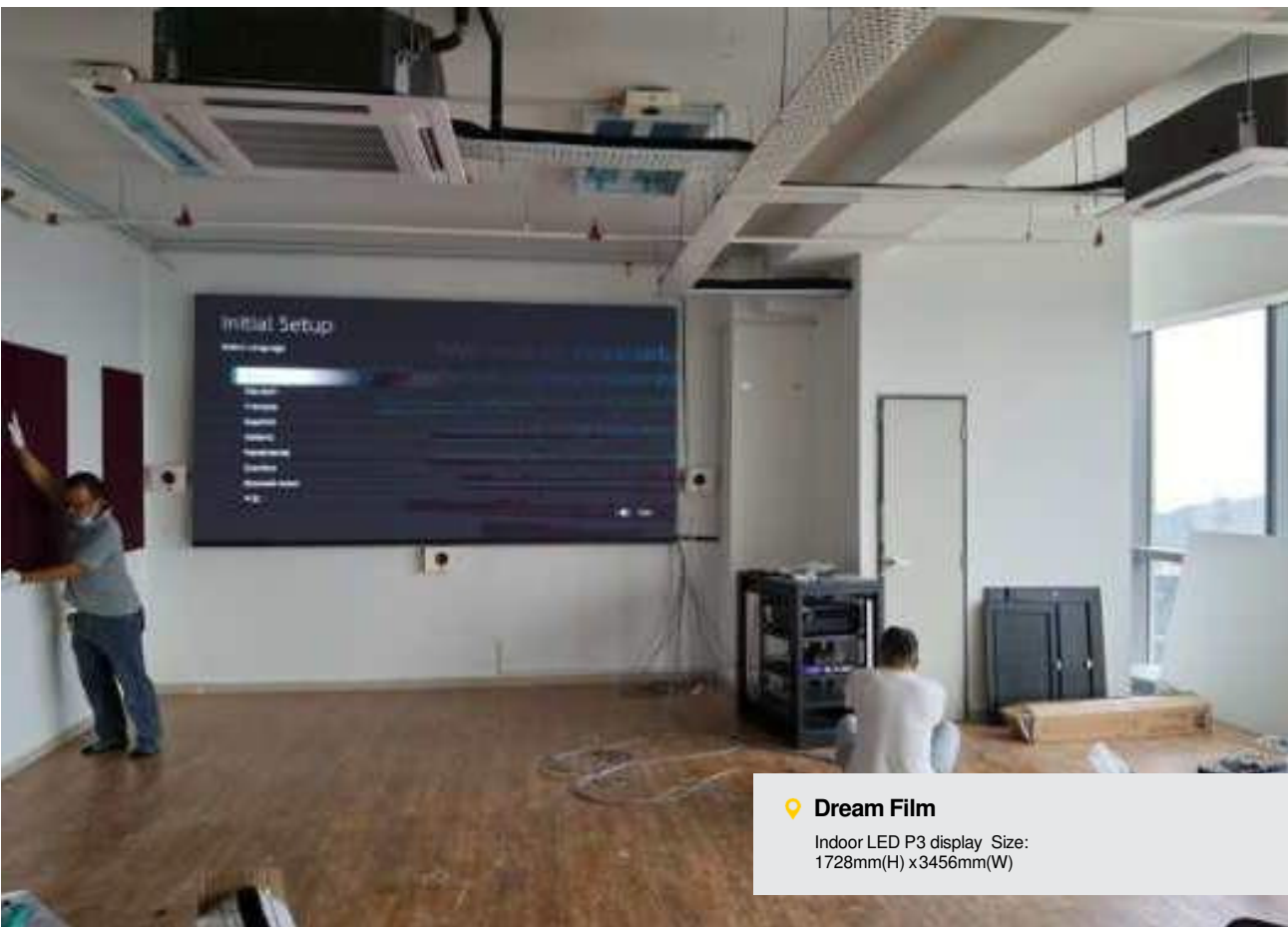
Indoor LED P4 Display Size:
1920mm(H) x 4800mm(W)

2 / SJK(C)Kwong Hon, Sungai Besi

Indoor LED P6 display
Size: 12'(H) x 24'(W)

3 / SJK(C)Sungai Way, Sungai Way

Indoor LED P6 display
Size: 15'(H) x 30'(W)



📍 Dream Film

Indoor LED P3 display Size:
1728mm(H) x 3456mm(W)





Digital Display/

1 / TGV Cinema, Johor Bahru

Wall-mounted LEDScreen
 Size: 55"

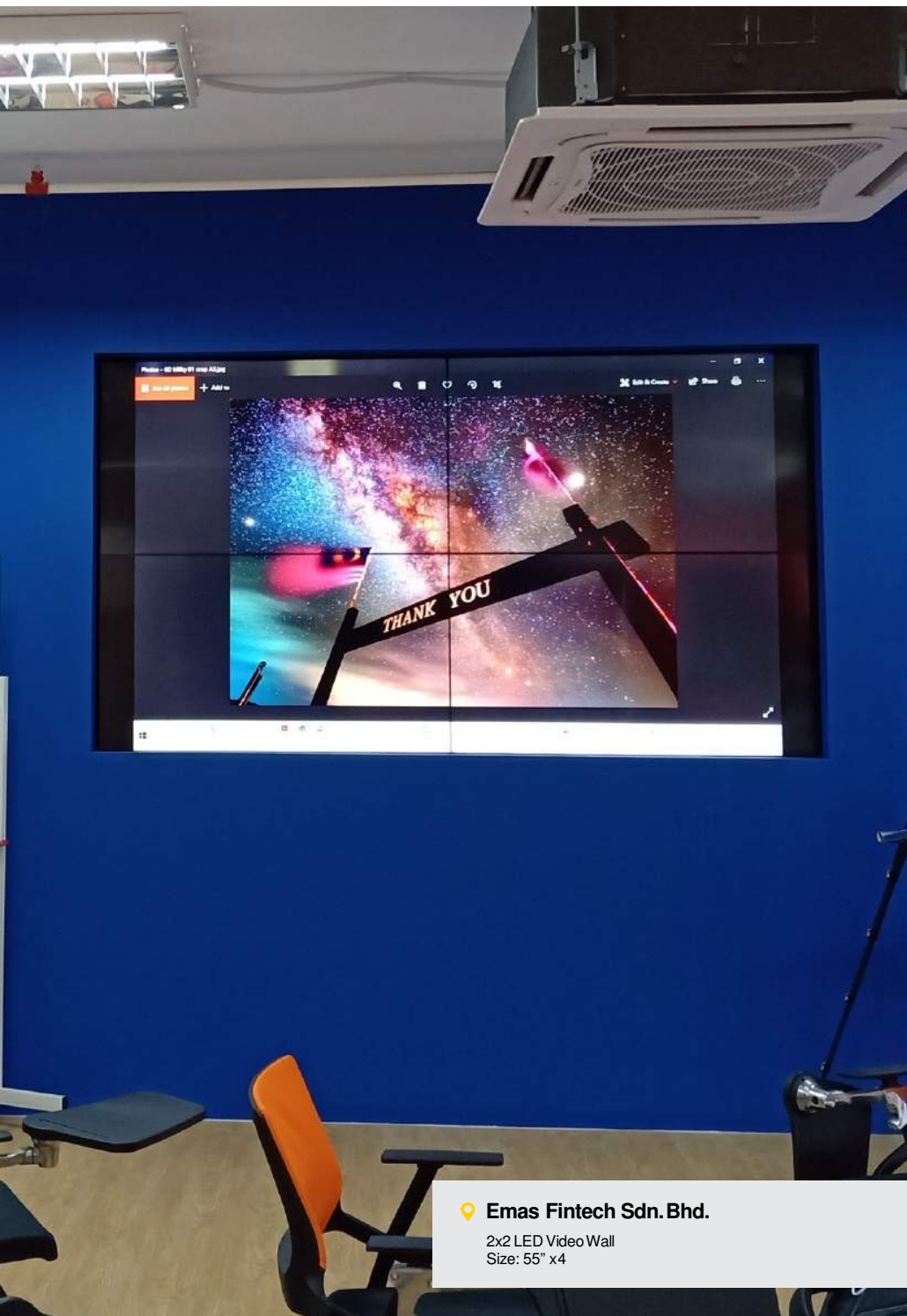
2 / TGV Cinema, KLCC

Wall-mounted LEDScreen
 Size: 55" x 2 units

3 / TGV Cinema, Johor Bahru

Wall-mounted LED Screen
 Size: 55"





Digital Display/

1 / Proton, Puchong Branch

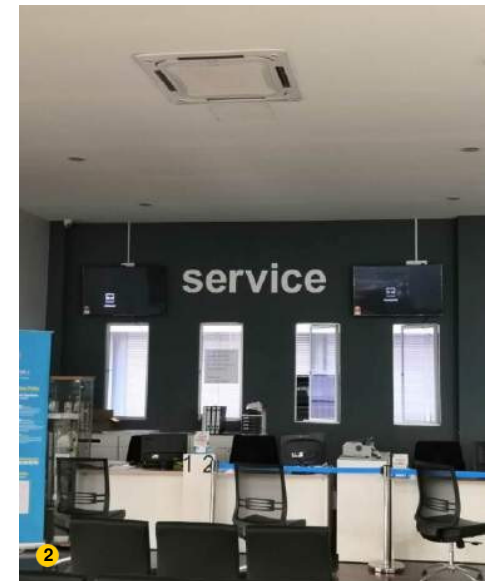
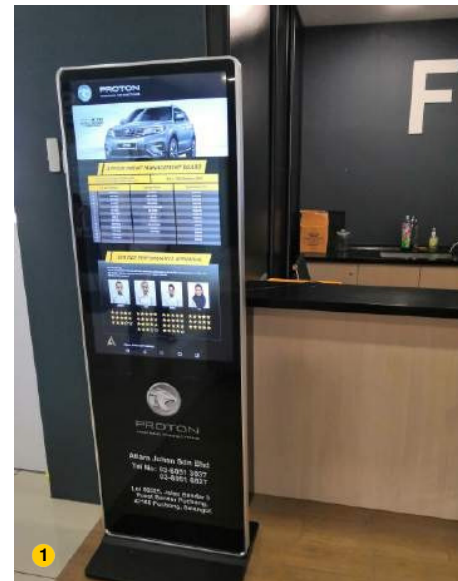
Non-Touch FloorStand
Size: 43"

2 / Proton, Puchong Branch

Wall-mounted LEDScreen
Size: 43" x 2 units

3 / Hospital Putrajaya

Touch Floor Standing
Size: 43"





📍 **Standard Chartered Bank, Petaling Jaya**

Touch Floor Stand
Size: 43" x 4 units

Digital Display/

1 / BHP Petrol, Kota Damansara

Non-Touch FloorStand
Size: 43"

2 / Hospital Pengajar UPM

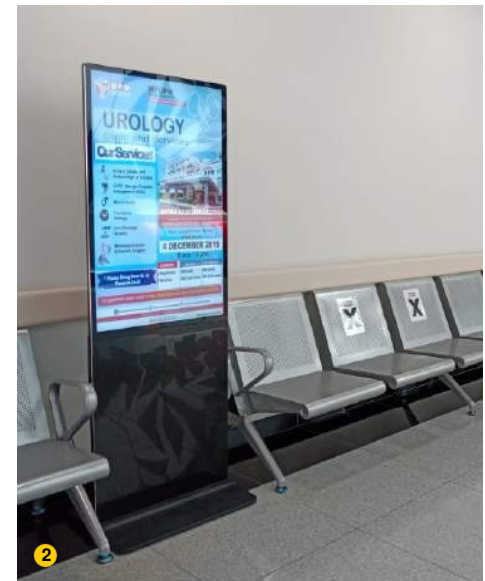
Non-Touch FloorStand
Size: 43"

3 / SPRM, Putrajaya

Non-Touch FloorStand
Size: 43"



1



2



3



Digital Display/

1 / Midvalley South key, Johor Bahru

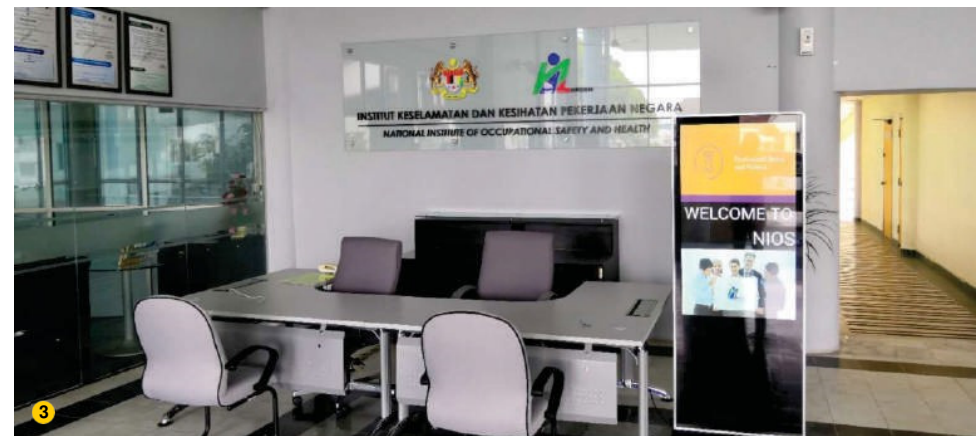
Multi-Touch Display
Size: 55" x 7 units

2 / Chef wan, Sungai Besi

Non-Touch FloorStand
Size: 55"

3 / NIOSH, Bangi

Touch FloorStand
Size: 43"





Digital Display/

1 /Cyberview, Putrajaya

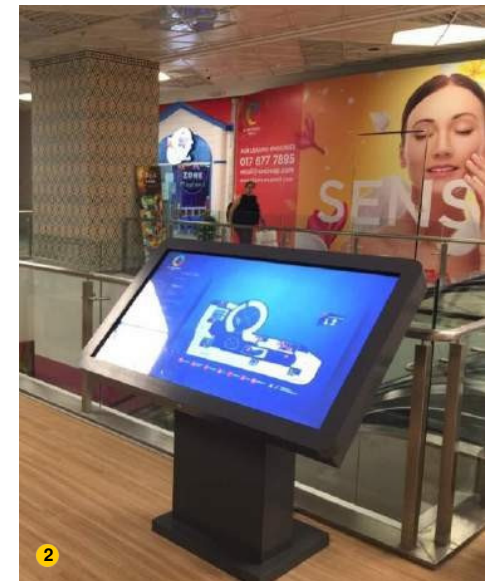
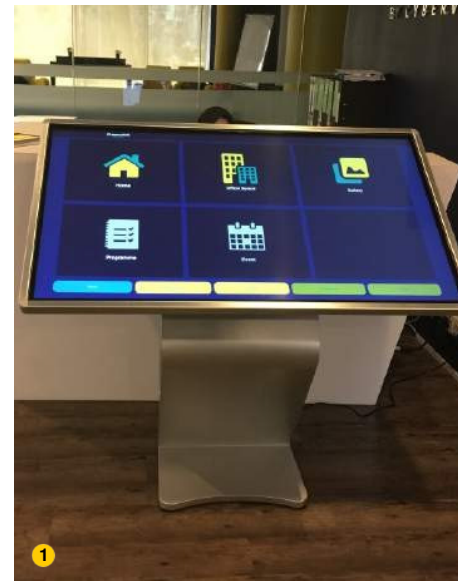
Multi-Touch Display
Size: 60"

2 / KL Gateway Mall

Multi-Touch Display
Size: 55" x 8 units

3 / Z,Perak

Outdoor Digital Display
Size: 55"





Digital Display/

1 / Mercedes-Benz, Mutiara Damansara

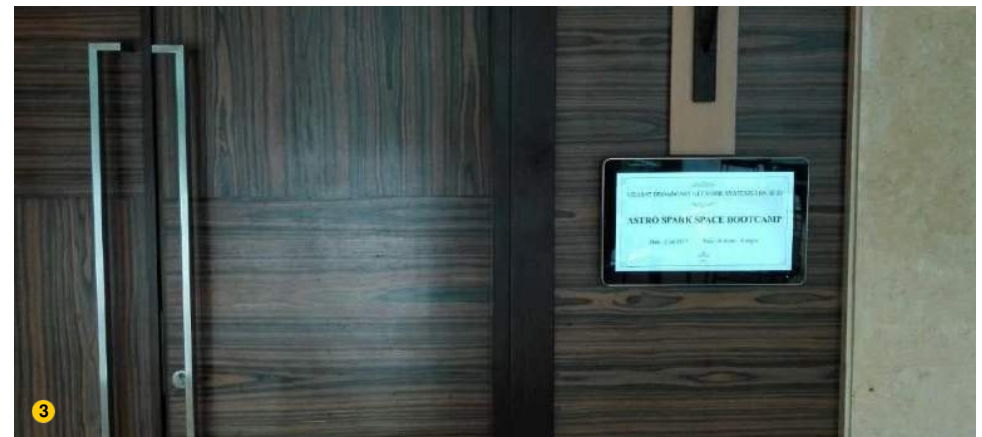
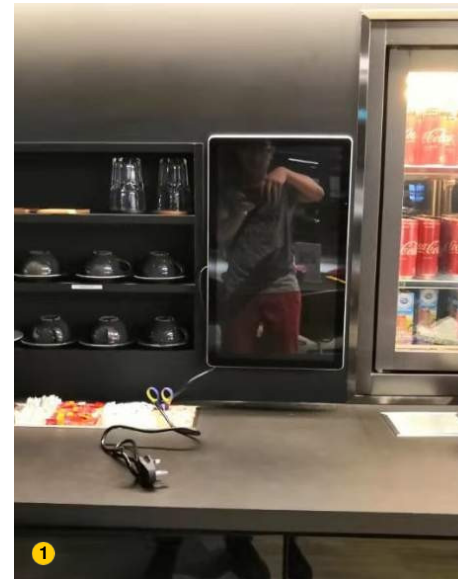
Wall-mounted LED Screen
Size: 21.5"

2 / Palace Golden Hotel,

Wall-mounted LED Screen
Size: 18.5" x 15 units

3 / Impiana Hotel, KLCC

Wall-mounted LED Screen
Size: 18.5" x 6 units





Digital Display/

1 / BankIslam

Non-Touch FloorStand
Size: 50" x 15 units

2 / Pavilion Mall

Customized Display
Size: 65" x 5 units

3 / Zok Noodle House, Sunway Pyramid

Non-Touch FloorStand
Size: 43"





Outdoor LED Lamp Poles /

1 / Jalan Klang Lama

Outdoor LED P8 display
Size: 2.5'(H) x 5'(W)

2 / Jalan Tun Razak

Outdoor LED P8 display
Size: 2.5'(H) x 5'(W)

3 / SHARP, Shah Alam

Outdoor LED P5 display Size:
1600mm(H) x 960mm(W)



📍 Jalan Kuching

Outdoor LED P8 display
Size: 2.5'(H) x 5'(W)





LED Truck / Face Recognition

1 / Unicom Event

Outdoor LED P3.91 display
Size: 256mm(H) x 384mm(W)

2 / Restoran 13, Puchong

Face Recognition
Size: 6"

3 / Demo Unit

Face Recognition
Size: 6"



📍 **Jalan Kuching**
Outdoor LED P8 display
Size: 2.5'(H) x 5'(W)



THANK YOU!

We appreciate and thank
you for going through our
company profile.
if there are any questions or
feedbacks, please contact us

Tel: 016-6268350

Subsidiary Company:



Interlight Technology .

Join Venture Company:

ARTZ Light Solutions (002850097-W)
www.artzldr.com

Manufacturer China:



Lianchengfa (LCF) Technology Co.Ltd